

AUXILIARY LOW WATER CUTOFF

When used with ENVI[®] Boiler Controller

- When installing the PK #8622150050 manual reset Low Water Cut-Off (LWCO) as an auxiliary device; the probe must be installed in the supply line at a point higher than the highest point of the boiler. Refer to the control manufacturer's installation instructions included with the control for piping/mounting options and limitations. Refer to wiring diagrams specific to boiler type on pages 2 and 3 of this bulletin for additional wiring information.

WARNING: SEPARATE POWER CIRCUITS FOR LWCO CONTROL AND ENVI CIRCUIT. BE SURE TO REMOVE JUMPER BETWEEN TERMINALS H AND P1 "IF INSTALLED" ON LWCO.

- **On Forced Draft Boilers:**

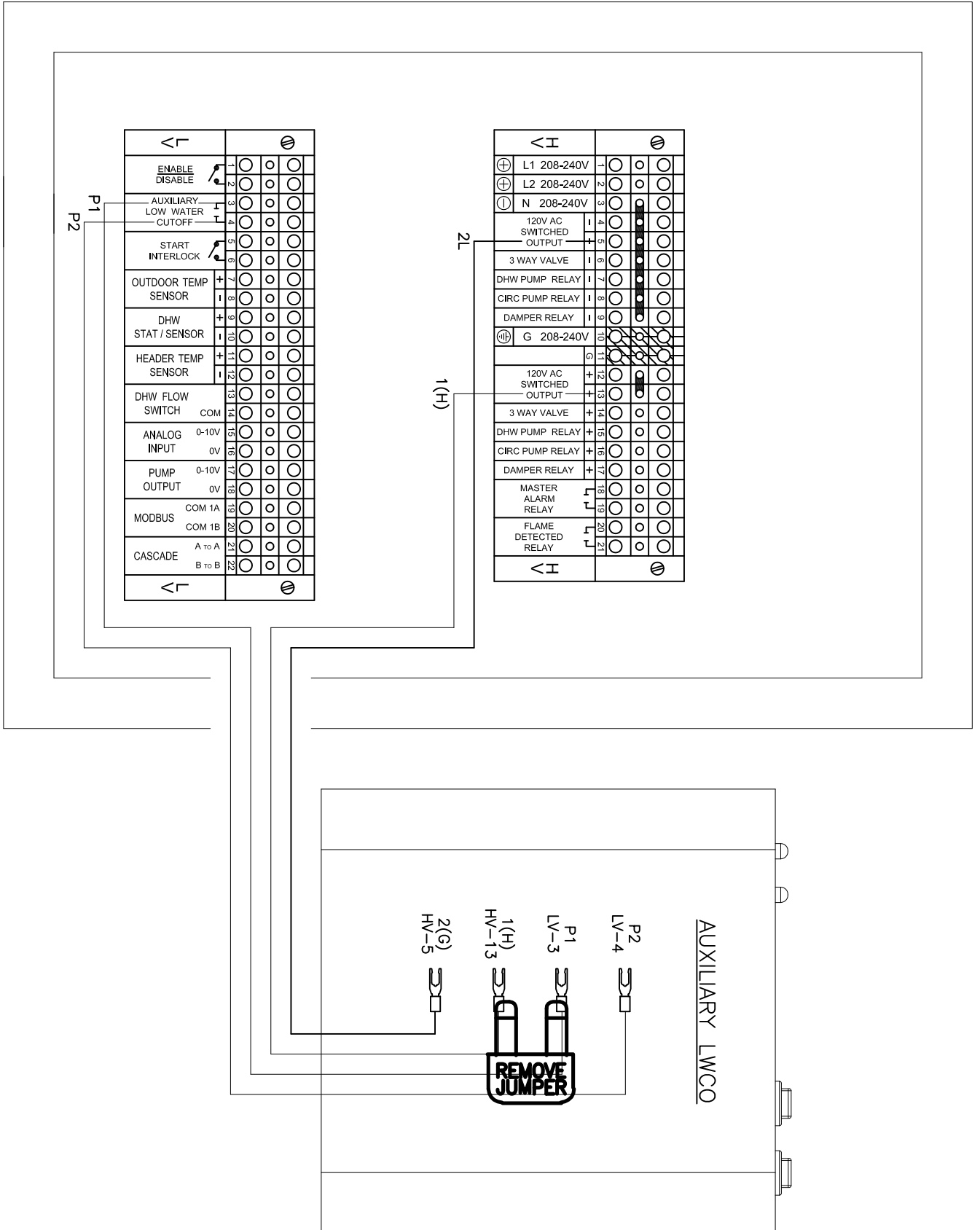
- Use wiring diagram B3 on page 2 of the control manufacturer's installation instructions. **Be sure to remove the jumper between H and P1 "if installed" on the low water cutoff.**
- Supply power to the control from the 120V switched output HVTB-13 & Neutral HVTB-5 on the PK Forced Draft boiler by wiring to terminals 1 & 2 on the LWCO.
- Remove the factory installed jumper wire from LVTB-3 & LVTB-4 on the P-K boiler and wire the control circuit interlock LVTB-3 & LVTB-4 to terminals P1 & P2 on the LWCO.
- Refer to wiring diagram specific to Forced Draft boiler on page 2 of this service bulletin for additional wiring information.

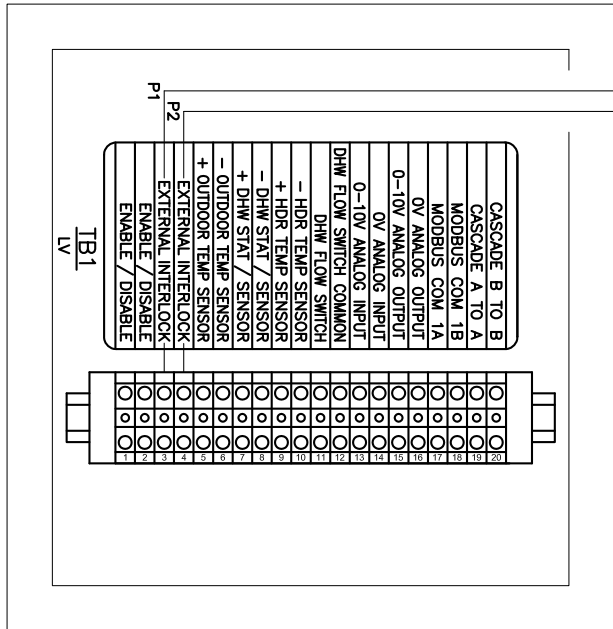
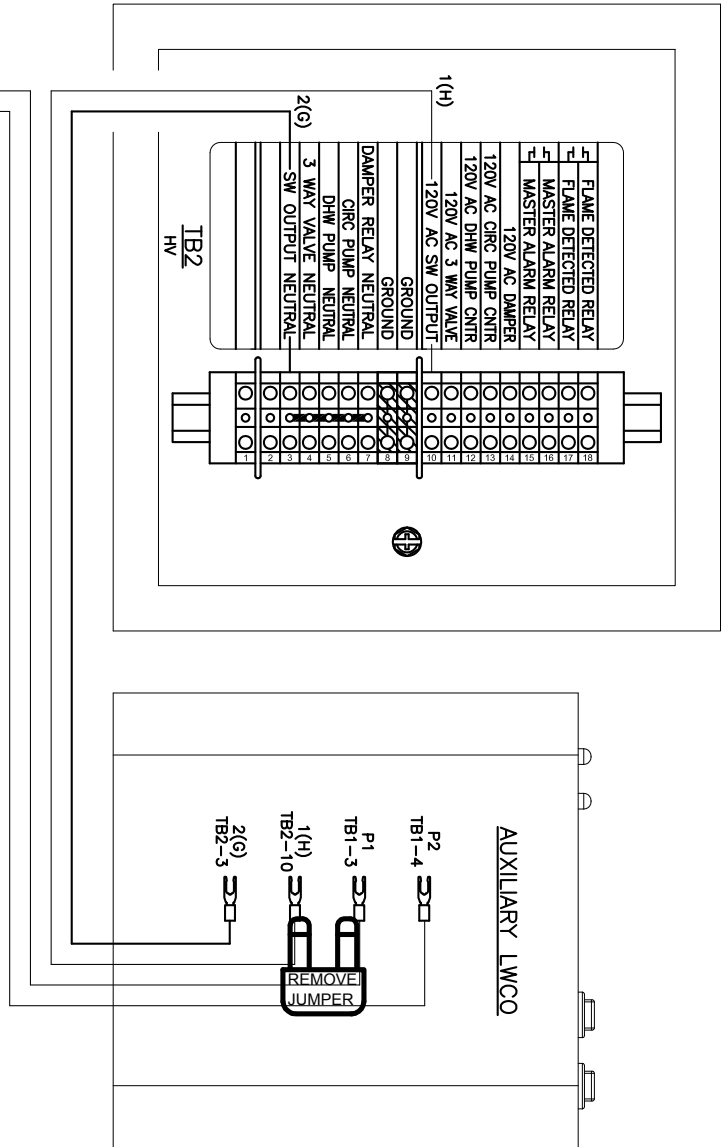
- **On MACH and SONIC Boilers:**

- Use wiring diagram B3 on page 2 of the control manufacturer's installation instructions. **Be sure to remove the jumper between H and P1 "if installed" on the low water cutoff.**
- Supply power to the control from the 120V switched output HVTB2-10 & Neutral HVTB2-7 on the PK MACH boiler by wiring to terminals 1 & 2 on the LWCO.
- Remove the factory installed jumper wire from LVTB1-3 & LVTB1-4 on the PK boiler and wire the control circuit interlock LVTB1-3 & LVTB1-4 to terminals P1 & P2 on the LWCO.
- Refer to wiring diagrams specific to MACH & SONIC boiler on page 3 of this service bulletin for additional wiring information.

Author: Jerry Spott
Approved by: Dave Connors
Distribution: RSM's, All Boiler Reps
cc: HIP-K Operations

MODU-FIRE FD
JUNCTION BOX





MACH / SONIC
JUNCTION BOX